



727-347-9915

Billet Low Drag Hubs

S550 4 Bolt Style

For any questions, please contact us at: 727-347-9915 Monday-Thursday 8am est – 6pm and Friday's 8am-4pm.

**Installation of this kit should only be performed by persons experienced in the installation and proper operation of disc brake systems.*

Step 1; Disassembly of parts:

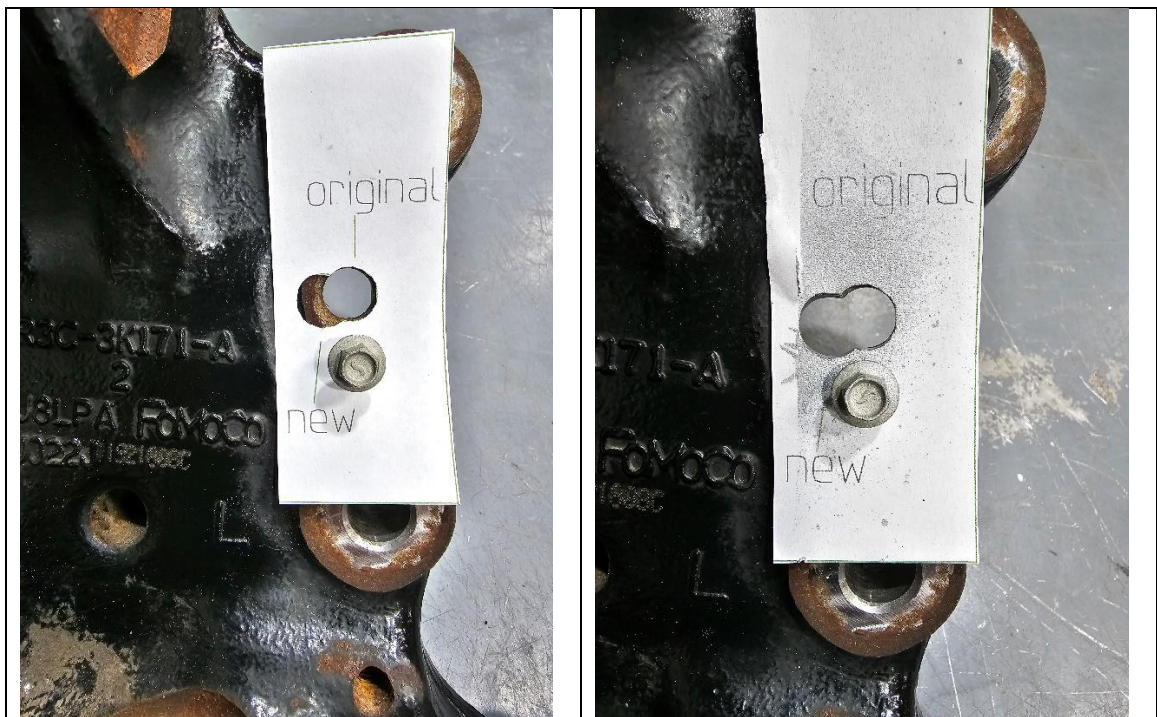
*Raise the front wheels off the ground and support the front suspension according to the vehicle manufacturer's instructions.

*Remove the front wheels, calipers, rotors, and hubs.

*Clean the front knuckle.

Step 2; Modifying Knuckles for Speed Sensor use:

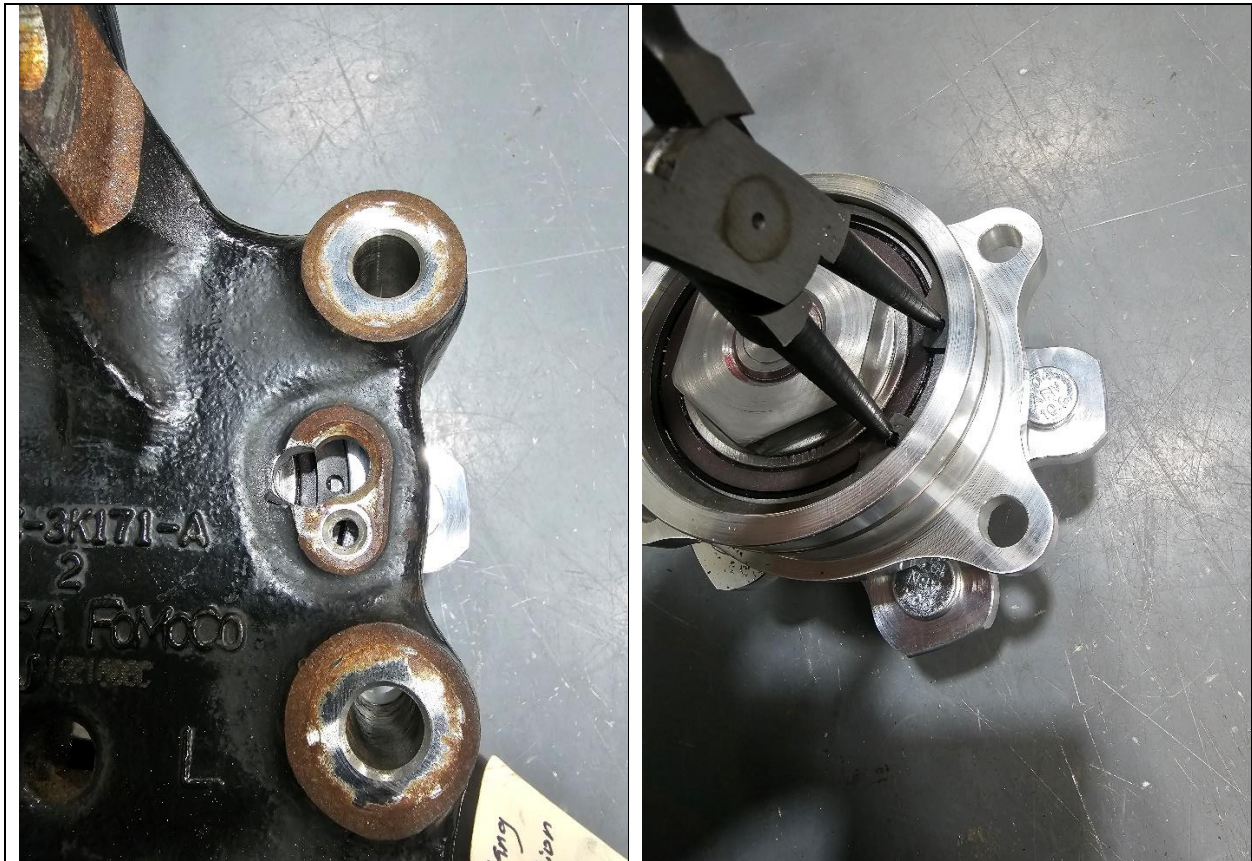
- *This step can be skipped if wheel speed sensors are not going to be used.
- *Do Not Damage the Brown Sensor Ring on the bearing, this will cause erratic readings and cause ABS Error Codes, This will not be covered under warranty and is expensive to fix.
- *The sensor mounting hole will need to be elongated as shown in the illustration to guarantee proper sensor reading. Please take your time on this step. Use the included template to mark the spindle where it needs to be ground. I used the template as a mask and used bright silver spray paint to show the area to be ground. You can simply scribe a line though.

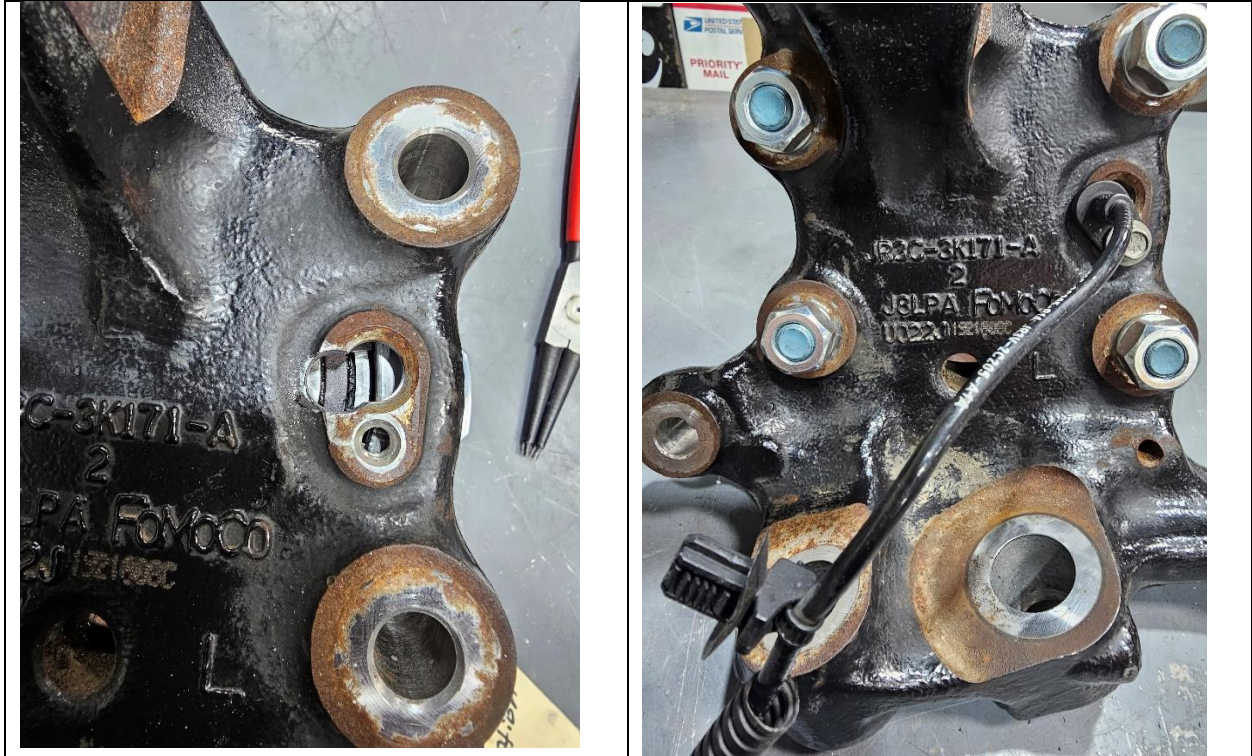


- *Use a die grinder with a burr bit to elongate the sensor hole as shown above.

Step 3; Mounting new hubs:

* Slide new hub into the front knuckle. Using the new hardware provided, align the hub up and lightly tighten 1 nut. Look through the sensor hole and if you can see the bearing retainer ring you will need to use snap ring pliers to adjust the opening of the ring to align with the sensor hole.





*Using the supplied hardware, mount the hubs to the front knuckle. The bolts will now pass from the outside of the car towards the inside then through the lock washer and into the nut. Torque the nuts to 75ft lbs. Install the wheel speed sensor using the oem bolt.

*Install brake components per manufacturer's instructions.

*Install wheels and torque to spec.

*Test drive the car at low speeds making turns in both directions. Park the car and check all fasteners. You should check fasteners routinely for safety.

*If the wheel speed sensors are not reading correctly make sure the sensor is centered over the brown magnetic sensor ring. If the sensor is centered and is still not reading properly, check the depth from the sensor mount to the brown ring, it should be between .585 and .600, if the distance is greater than this you may need to grind a little off of the mounting pad so the sensor is closer to the brown ring****but not touching***

Included in kit:

- (2) Billet Hub Assemblies W/ M14 x 1.5 x 60mm wheel studs
- (8) 12M x 70mm grade 10.9 Hex Head Bolts
- (8) 12M X 1.75 grade 10 Hex Nuts
- (8) 12M Split Ring Lock washers